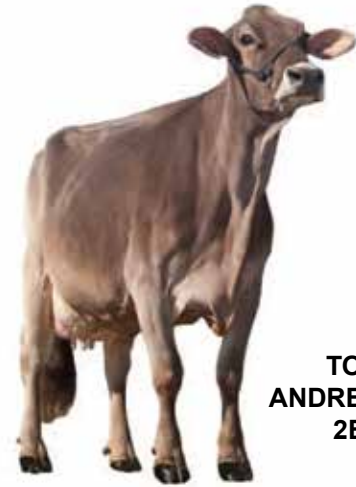




TOP ACRES BONANZA WHISP ET '2E93/93MS'

5/04 365d 2x 35842m 6.2% 2251f 3.3% 1175p
 All-American Jr. 2-Year-Old 2011
 Nominated All-American 5-Year-Old 2014



**TOP ACRES
 ANDRE WHISPER ET
 2E93/93MS**



**WISP
 3E95/95MS**

**WIZARD
 3E95/95MS**

* UNAN. ALL AMERICAN PROD OF DAM '16, '15, '13
 Maternal Sisters to Bonanza Whisp

TOP ACRES BONANZA WHISP ET 68116092

BORN: 3/04/2009
 06/07 2E93 E95 E91 E93 E95 E93 (10/15)
 2/00 365d 2x 20969 5.4 1143 3.4 728
 3/05 365d 2x 26788 7.1 1811 3.3 904
 5/04 365d 2x 35842 6.2 2251 3.3 1175
 ALL AMERICAN JR. YEAR OLD, 2011
 NOMINATED ALL AMERICAN 5 YEAR OLD, 2014
 1ST JR. 2 YEAR OLD, INTERNATIONAL SHOW, 2011
 MEMBER UNANIMOUS AA PRODUCE, 2014

Maternal sister to:

- TOP ACRES SUPREME WISP "3E95/95MS"**
 Reserve All American 5 Year Old, 2012
- TOP ACRES SUPREME WIZARD ET "2E95/94MS"**
 7/05 365d 2x 35404 4.9 1737 3.5 1246
 Unanimous All American Sr. 3 Yr. Old, 2013
 All American Component Merit, 2017
 Member AA Produce, 2013, '14, '15, '16
 Grand Champion, International Show, 2017
 Res. Grand Champion, Madison, 2013, 2015
- TOP ACRES PS WHAZOO ET "E92/92MS"**
 National Total Performance Winner, 2014
- TOP ACRES BONANZA WINZIT ET "E92/90MS"**
- TOP ACRES BONANZA WHISTA ET "E90/90MS"**

MORT LEGACY BONANZA *TM 197225

Genetic Conditions: *TM PT DT WT BH2T
 Not Classified
 PPR: -111 95%R PTAT: -0.1 97%R (08/20)
 PTA: -930m -30f -32p -293NM\$ 98%R (GEN)
 PTA PL: -1.3 SCS: +3.18 DPR: +0.2 SCE: +3.6
 PTA LIV: -0.9
 367 dau. av. 22620 4.1 938 3.3 752
 315 class. dau. av. FS:85.2 UDC:0.10 FLC:0.03

TOP ACRES ANDRE WHISPER ET 938574

06/02 2E-E93 E90 E95 E92 E93 E93 (02/11)
 02/04 365d 2X 21220 4.9 1040 3.4 729 DHIA
 05/07 365d 2X 32941 5.8 1921 3.6 1174 DHIA
 * WINTER HFR CALF NOM ALL AMERICAN 2005
 * RES JR CHAMP SOUTHEAST NATIONAL 2006
 * 1st WINTER YRLG HFR SOUTHEAST NATIONAL 2006
 * 3rd WINTER YRLG HFR SPRING NATIONAL 2006
 * 2nd WINTER HFR CALF SOUTHEAST NATIONAL 2005

3rd Dam: MY T FINE WHISPER *TW 2E Cert.

4/01 365d 2x 25020 4.6 1145 3.8 947
 5/03 365d 2x 23150 4.5 1046 3.6 832
 6/06 365d 2x 24910 4.4 1099 3.7 923
 HON. MENTION ALL AMERICAN 4 YEAR OLD, 1990
 RES. ALL AMERICAN 5 YEAR OLD, 1991; AGED COW, 1992
 RES. GRAND CHAMPION EASTERN NATIONAL 1990, 1992
 GRAND CHAMPION EASTERN NATIONAL 1991

BLESSING MORT LAURA LEGACY 193906

Genetic Conditions: PT DT MT WT BH2C
 E91
 PPR: -81 98%R PTAT: +0.1 98%R (08/20)
 PTA: -164m -14f -18p -341NM\$ 99%R (MACE)

MORT NOAH BOUQUET 891175

12/06 2E-E94 E95 E93 E94 E94 E93 (07/12) *CERT*
 Protein Plus
 08/04 365d 2X 40270 4.0 1592 3.2 1271 DHIR
 Lifetime: 3203d 277970m 11454f 9781p

ELM PARK ANDRE ET 192391

"Not Classified" MACE
 PPR: -101 86%R PTAT: -0.1 83%R (4/18)
 PTA: -757m -18f -21p -340NM\$ 93%R

TOP ACRES EJ WHIZZBANG 5E93 Cert.

5/04 365d 2x 27720 6.0 1670 3.6 985
 8/00 365d 2x 28980 5.2 1505 3.5 1011
 10/10 365d 2X 27750 5.2 1450 3.4 934
 NATIONAL TOTAL PERFORMANCE WINNER, 1996
 ALL AMERICAN 1991, 1992, 1993, 1995
 GRAND CHAMPION, SOUTHEAST NATIONAL 1998
 RES. GRAND CHAMPION CENTRAL NATIONAL 1993

