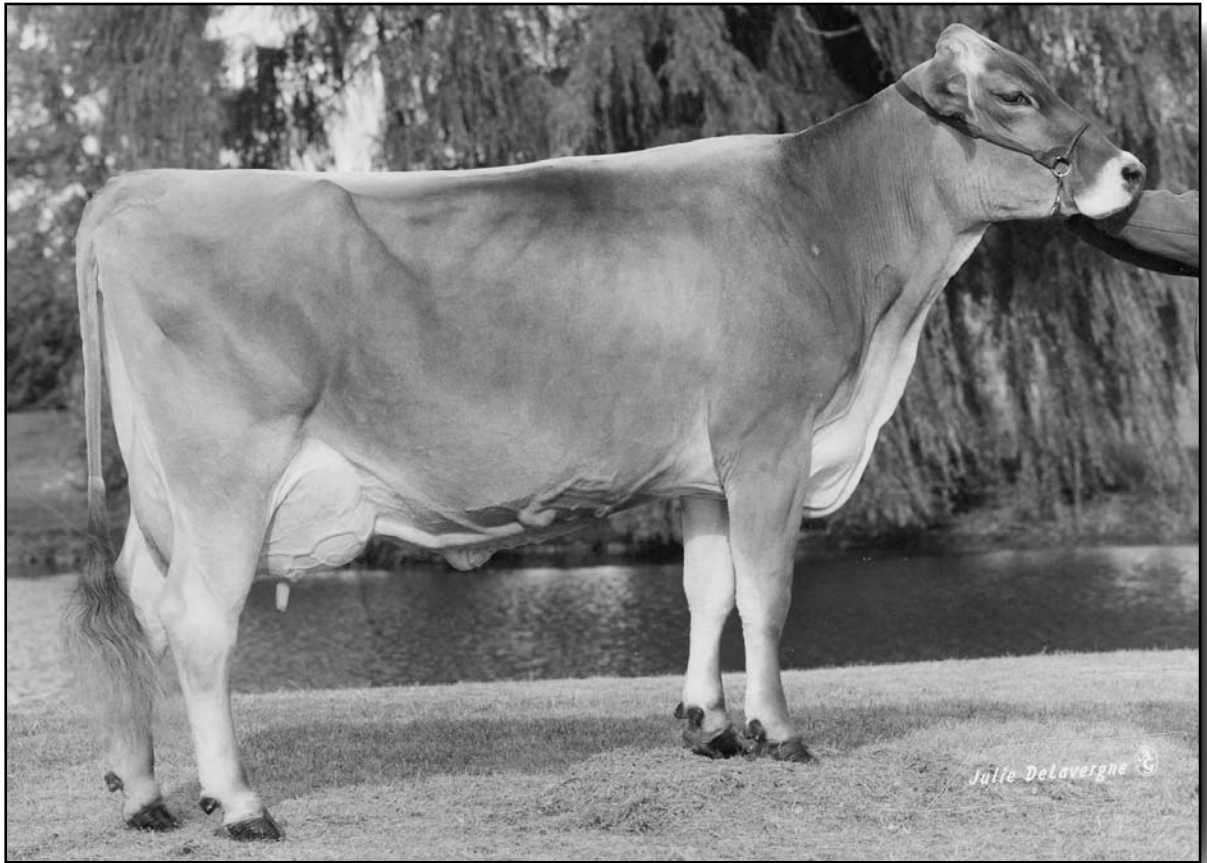




*Sponsor
of the
Top Ten Sale*



Bo Joy Ensign Gredel "5E94"
Dam of Lots B9 and B10

Lot B9 - Top Acres M Agenda Greta 68116088

Born: 9/3/08

Tattoo: 1441

Bred 5/18/10 to Brook Hollow Party Boy ET 198471 "E93"

Consigned by:

Wayne E. Sliker & Kenny Joe Manion
St. Paris, Ohio & Scottsville, Kentucky
937.663.4645 & 270.237.0773

BLESSING BANKER AGENDA ET *TM
"Not Classified" **194882**
MACE:
PPR: +55 92%R PTAT: +0.7 90%R (4/10)
PTA: -492m +14f -1p +179NM\$ 96%R
460 daus. avg. 22730 4.1 941 3.3 758
214 class. daus. avg.
FS: 83.7 UDC: +0.64 FLC: +1.66

BO JOY ENSIGN GREDEL 843896
15/02 "5E94" E93 E94 E92 E96 E94 (10/09)
2/07 308d 2x 21773 3.5 777 3.2 695
3/07 335d 2x 20970 3.5 742 3.5 731
4/11 365d 2x 30190 4.6 1384 3.4 1039
6/10 365d 2x 27220 4.9 1337 3.1 855
Reserve All American Jr. 3 Year Old, 1997
Reserve All American 4 Year Old, 1998
Reserve All American 5 Year Old, 1999
Nominated All American Aged Cow, 2000
Hon. Mention All American Aged Cow, 2002
Grand Champion, Royal Winter Fair, 1998
1st Jr. 3 Year Old, Eastern National, 1997
1st 5 Year Old, Central National, 1999
2nd & 2nd Udder Component Merit Cow,
Central National, 2002

BLESSING AYTOLA BANKER 190388
"Not Classified" MACE
PPR: -95 98%R PTAT: -0.1 99%R (4/10)
PTA: -501m -28f -11p -411NM\$ 99%R

BLESSING PROPHET ASHTON *TW 863033
10/01 "3E91" 3E91 E90 3E95 2E88 3E91
"Elite"
4/11 365d 2x 39470 4.2 1653 3.4 1351
6/02 356d 2x 35980 4.7 1682 4.0 1422
9/08 365d 2x 37770 4.3 1612 3.3 1240

R HART SIMON ENSIGN ET 184138
"V88" MACE
PPR: +23 99%R PTAT: +0.5 99%R (4/10)
PTA: +289m -20f -8p +153NM\$ 99%R

BO JOY EMORY GRETCHEN 822912
7/00 "2E93 2E95 E95 2E93 2E91 2E93
2/00 298d 2x 9210 4.6 420 3.8 352
2/11 305d 2x 12190 4.1 497 3.9 472
4/02 332d 2x 22122 4.5 1003 3.6 811
6/07 365d 2x 28440 4.4 1263 3.5 983
7/11 365d 2x 17590 4.4 775 3.9 678
Nominated All American Aged Cow, 1999
1st 5 Year Old, Maryland State Fair, 1997
2nd Aged Cow and Reserve Grand Champion,
Eastern National, 1999

Maternal Sisters to Lots 9 & 10

TOP ACRES PILOT GROOVY ET "E91/93MS"
Intermediate Champion, Madison, 2009
TOP ACRES PRE GRETSKY "E92"
TOP ACRES DENVER GREDEL ET "E91/91MS"
TOP ACRES EJ GRACEFUL ET "E91/92MS"
TOP ACRES LEGACY GRANDE ET "E91/91MS"
TOP ACRES M PILOT GINGER ET "E90/90MS"
TOP ACRES PILOT GUSTO ET "E90/90MS"
TOP ACRES PILOT GEISHA OCS ET "E90/90MS"
TOP ACRES LEGACY GYPSY ET "E91/91MS"
TOP ACRES PREMIUM GO OCS ET "V89/91MS"
TOP ACRES PILOT GAIIETY OCS ET "VG88/90MS"
TOP ACRES DENVR GRATEFUL ET "VG88/91MS"

VICTORY ACRES JUBILAT EMORY *TM

3rd and 4th Dams:
CHIC-A-WIL STYLISH GRACE
5/03 "V86" V E V V "Certified"
4/09 360d 2x 19870 4.4 880 3.6 710
CHIC-A-WIL QUICK "2E"
4/03 314d 2x 14450 4.2 604
9/02 354d 2x 22330 3.7 820



*Sponsor
of the
Top Ten Sale*

Top Acres Pilot Groovy ET "E91/93MS"
All American Sister to Lots B9 and B10

Lot B10 - Top Acres M Rhythm Girl ET 68114954

Born: 6/12/09

Tattoo: 410

Consigned by:
Jeffrey Wolfe, New Oxford, Pennsylvania
717.752.5979

FOREST LAWN T J RHYTHM 183259

"E93"
MACE:
PPR: -57 96%R PTAT: +0.3 98%R (4/10)
PTA: -769m -18f -22p -69NM\$ 97%R
1072 daus. avg. 20101 4.1 821 3.3 665
451 class. daus. avg.
FS: 85.4 UDC: +0.24 FLC: +0.0

BO JOY ENSIGN GREDEL 843896

15/02 "5E94" E93 E94 E92 E96 E94 (10/09)
2/07 308d 2x 21773 3.5 777 3.2 695
3/07 335d 2x 20970 3.5 742 3.5 731
4/11 365d 2x 30190 4.6 1384 3.4 1039
6/10 365d 2x 27220 4.9 1337 3.1 855
Reserve All American Jr. 3 Year Old, 1997
Reserve All American 4 Year Old, 1998
Reserve All American 5 Year Old, 1999
Nominated All American Aged Cow, 2000
Hon. Mention All American Aged Cow, 2002
Grand Champion, Royal Winter Fair, 1998
1st Jr. 3 Year Old, Eastern National, 1997
1st 5 Year Old, Central National, 1999
2nd & 2nd Udder Component Merit Cow,
Central National, 2002

TOP ACRES BALISON TEMPO ET 181018

"E" MACE
PPR: -223 86%R PTAT: -0.8 84%R (4/10)
PTA: -2106m -51f -63p -410NM\$ 89%R

IDYL WILD IMPROVER JINX (M) 664521

9/11 "3E" 3E 3E 3E 3E "Superior Brood Cow"
6/05 365d 2x 25830 4.5 1172 3.5 915
7/10 365d 2x 29840 4.3 1284 3.6 1060
All American, 2 Yr., 1981; 3 Yr., 1982; Aged, 1985

R HART SIMON ENSIGN ET 184138

"V88" MACE
PPR: +23 99%R PTAT: +0.5 99%R (4/10)
PTA: +289m -20f -8p +153NM\$ 99%R

BO JOY EMORY GRETCHEN 822912

7/00 "2E93 2E95 E95 2E93 2E91 2E93
2/00 298d 2x 9210 4.6 420 3.8 352
2/11 305d 2x 12190 4.1 497 3.9 472
4/02 332d 2x 22122 4.5 1003 3.6 811
6/07 365d 2x 28440 4.4 1263 3.5 983
7/11 365d 2x 17590 4.4 775 3.9 678
Nominated All American Aged Cow, 1999
1st 5 Year Old, Maryland State Fair, 1997
2nd Aged Cow and Reserve Grand Champion,
Eastern National, 1999

Maternal Sisters to Lots 9 & 10

TOP ACRES PILOT GROOVY ET "E91/93MS"
Intermediate Champion, Madison, 2009
TOP ACRES PRE GRETSKY "E92"
TOP ACRES DENVER GREDEL ET "E91/91MS"
TOP ACRES EJ GRACEFUL ET "E91/92MS"
TOP ACRES LEGACY GRANDE ET "E91/91MS"
TOP ACRES M PILOT GINGER ET "E90/90MS"
TOP ACRES PILOT GUSTO ET "E90/90MS"
TOP ACRES PILOT GEISHA OCS ET "E90/90MS"
TOP ACRES LEGACY GYPSY ET "E91/91MS"
TOP ACRES PREMIUM GO OCS ET "V89/91MS"
TOP ACRES PILOT GAILEY OCS ET "VG88/90MS"
TOP ACRES DENVR GRATEFUL ET "VG88/91MS"

VICTORY ACRES JUBILAT EMORY *TM

3rd and 4th Dams:

CHIC-A-WIL STYLISH GRACE
5/03 "V86" V E V V "Certified"
4/09 360d 2x 19870 4.4 880 3.6 710
CHIC-A-WIL QUICK "2E"
4/03 314d 2x 14450 4.2 604
9/02 354d 2x 22330 3.7 820