

*A Lilac  
for  
Louisville  
Selling - Lady in Red's  
Power Surge  
July 3<sup>rd</sup>*

**Little Hill Leg Lady in Red  
"VG87/3y"**

Lady in Red has brothers in A.I. and special milky daughters in the herd. We like our Power Surges and think you will too!



**Little Hill Exclaim Lady "2E93"**

Lifetime to date: 205,367m 10,685f 7,401p

2003 Mt. Zion Rd., Lebanon, Pennsylvania 17046  
Phone/Fax: 717.933.8995 • Terry's Cell: 717.304.9454  
email: littlehillfarm@yahoo.com • www.littlehillfarm.net



**28 Little Hill PS Lilac ET**

Born: May 1, 2008  
Tattoo: 626 Reg. No. 68101218

Fresh 4/25/10

**3rd Dam: WIND MILL SB LICORICE ET 858037**

9/03 "3E91" E90 E90 E94 E91 E90  
"Certified"

4/07 328d 3x 31760 3.7 1184 3.2 1018  
5/07 365d 3x 34780 3.8 1335 3.2 1114  
7/03 365d 3x 28453 3.9 1107 3.3 930

Lifetime: 2398d 175,006m 6950f

**4th Dam: WIND MILL EMORY LOLLIE ET "E90/EMS"**

3/08 355d 2x 21400 4.6 995 3.5 750

**5th Dam: COW TELSTAR LADY "VG86"**

2/04 365d 2x 22410 4.1 930 3.5 781

**6th Dam: SUNNY VIEW LADY DIANNA "V85"**

2/04 365d 2x 16960 4.0 678 3.6 605

**7th Dam: SUNNY VIEW IMPROVED LADY "5E"**

4/09 365d 2x 22150 4.9 1089 4.0 881  
5/11 365d 2x 23880 4.3 1032 3.8 900

Consigned by  
Little Hill Farm  
Lebanon, Pennsylvania  
717.933.8995

**TOP ACRES POWER SURGE \*TM 196004**

"Not Classified"

GEN:

PPR: +34 85%R PTAT: +0.9 83%R (4/10)

PTA: +481m -5f +12p +65NM\$ 91%R

93 daus. avg. 23601 3.8 905 3.3 769

39 class. daus. avg.

FS: 84.6 UDC: +0.00 FLC: +0.68

**LITTLE HILL LEG LADY IN RED 940569**

3/10 "V87" E91 +84 V87 V86 V86 (4/09)

1/10 365d 3x 26120 3.9 1009 3.2 834

3/04 365d 3x 32260 4.2 1369 3.3 1052

**TOP ACRES JET POWER ET 191610**

"Not Classified" MACE

PPR: -14 87%R PTAT: +0.2 83%R (4/10)

PTA: +472m +6f +1p -55NM\$ 89%R

**HILL-N-DALE ENSIGN SUE ET 841967**

12/09 "3E93" E94 E93 E92 E90 E95 "Certified"

3/01 365d 2x 28130 4.2 1170 3.4 950

4/04 365d 2x 36360 3.7 1348 3.5 1255

6/02 365d 2x 34630 4.8 1656 3.5 1195

All American 4 Year Old, 1998; 5 Year Old, 1999

**BLESSING MORT LAURA LEGACY 193906**

"Not Classified" MACE

PPR: -72 94%R PTAT: +0.7 96%R (4/10)

PTA: -7m -6f -10p -324NM\$ 97%R

**LITTLE HILL EXCLAIM LADY 900583**

9/02 "3E93" E95 E96 E91 E92 E93 (1/10)

"Certified"

PPR: +120 62%R PTAT: +0.7 68%R (4/10)

PTA: +796m +49f +21p +285NM\$ 92%\$

2/00 365d 3x 25414 4.1 1039 3.0 764

3/04 365d 3x 29750 4.3 1266 3.3 973

4/07 365d 3x 39740 5.8 2311 3.0 1196

6/00 365d 3x 45560 5.8 2659 3.1 1401

7/05 365d 3x 41490 5.5 2276 3.1 1271

1st Sr. 4 Year Old 305 Day & 365 Day 3x Fat HR

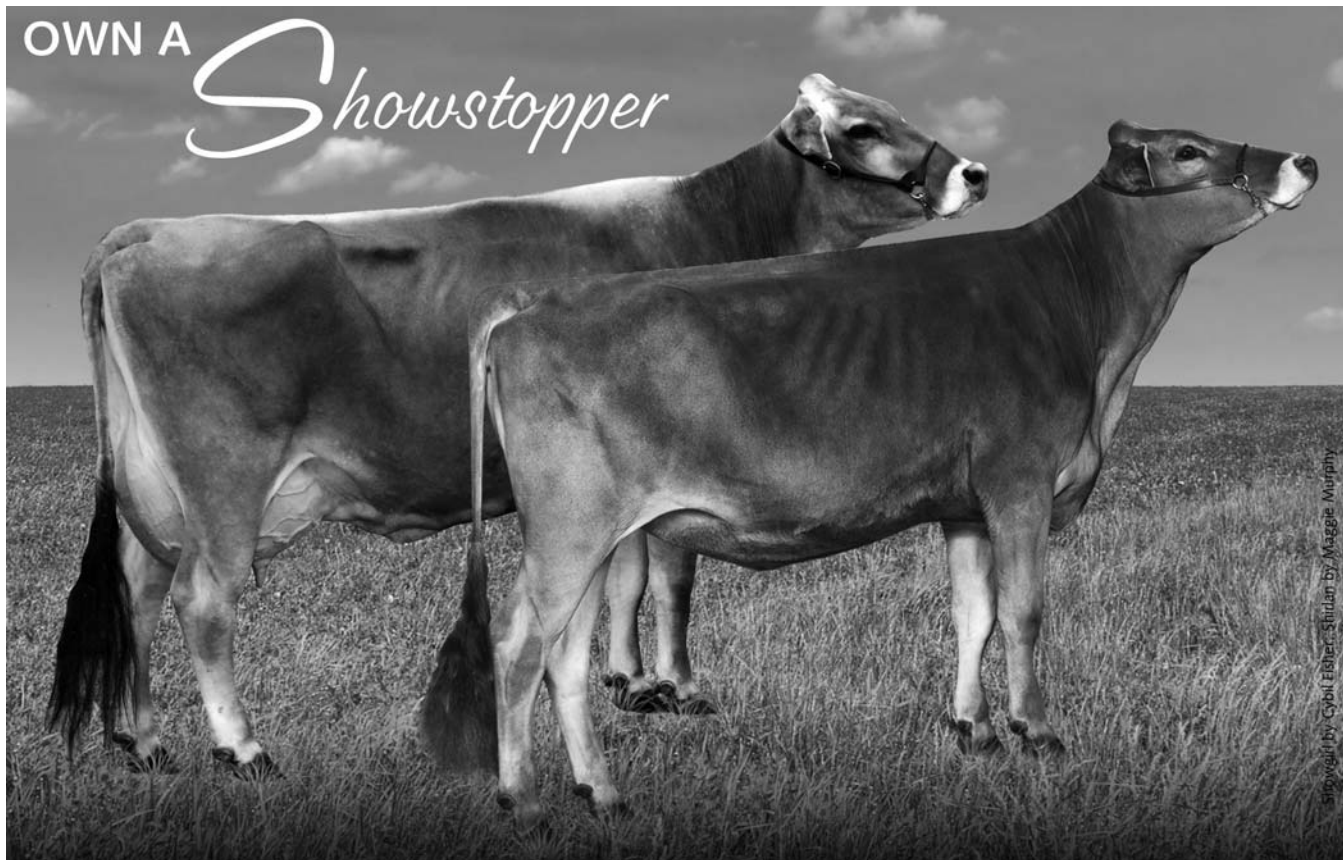
2nd Mature Cow 365 Day 3x Fat Honor Roll

4th Mature Cow 365 Day 3x Milk Honor Roll

3rd Mature Cow 305 Day 3x Fat Honor Roll

OWN A

# Showstopper



showgirl by Cybil Elbert; Shirilan by Maggie Murphy

### Blessing PR Shirilan '3E93'

5-00 365d 31,740m 5.7 1804f 3.5 1117p  
National Total Performance Winner 2000  
5-time All-American Nominee

### Kulp Terra TA Showgirl ET 'V88'

2-06 33d 2,115m 3.8 92f 3.2 74p rip  
National Bell Ringer Fall Yearling 2009  
Reserve Junior Champion Eastern National 2009  
Nominated All-American Fall Calf 2008

# RADICAL

## GENETICS

The Rucks Family - 863.634.3187  
The DeGroft Family - 270.834.0462  
[www.radicalgenetics.com](http://www.radicalgenetics.com)

## 29 RAD-ical Showstopper

Tattoo: R22 Born: March 20, 2010  
Reg. No. 68119120

### 3rd Dam: BLESSING KOHL SHIRLEY 761983

13/01	"4E90"	E91	E91	E90	V86	E90			
6/07	365d	2x	26330	4.4	1148	3.8	1002		
7/11	344d	2x	26320	4.4	1167	3.7	979		
10/01	365d	2x	29630	4.7	1382	3.6	1070		
12/04	290d	2x	21490	4.1	890	3.4	724		

### 4th Dam: BLESSING BEAUTICIAN KING SHIRL

9/11	"2E"	2E	2E	2E	V				
4/02	365d	2x	20570	4.1	849	3.5	714		
5/07	365d	2x	20800	4.3	884	3.6	742		
7/09	299d	2x	20800	4.1	848	3.5	733		
8/10	365d	2x	24430	4.1	1004	3.5	856		

Consigned by  
Lindsey A. Rucks  
Cave City, Kentucky  
863.634.3187

### TOP ACRES C WONDERMENT ET \*TM

"E90" "Qualified Sire" 196880

GEN:  
PPR: +192 79%R PTAT: +0.9 84%R (4/10)  
PTA: +1489m +62f +46p +328NM\$ 83%R  
45 daus. avg. 23887 4.0 965 3.3 784  
38 class. daus. avg.  
FS: 84.9 UDC: -0.13 FLC: +0.02

### KULP-TERRA TA SHOWGIRL ET 959573

2/07 "V88" V88 V87 V86 V88 V88 (4/10)  
2/06 33d 2x 2115 3.8 92 2.2 74  
(RIP)

1st test: 75#  
Nominated All American Fall Calf, 2008  
1st Fall Calf and Junior Champion,  
Southern National, 2008  
1st Fall Calf, Ohio State Show, 2008  
1st Fall Yearling, Kentucky State Fair, 2009  
2nd Fall Yearling and Res. Junior Champion,  
Eastern National, 2009  
2nd Fall Yearling, Southeast National, 2008

### R HART BC COLLECTION \*TM 189182

"E93" MACE  
PPR: +3 99%R PTAT: +0.5 99%R (4/10)  
PTA: +169m +12f +10p -171NM\$ 99%R

### TOP ACRES EJ WHIZZBANG 795771

16/09 "5E93" 5E94 5E95 5E93 5E95 5E92  
5/04 365d 2x 27720 6.0 1670 3.6 985  
8/00 365d 2x 28980 5.2 1505 3.5 1011  
10/00 365d 2x 27750 5.2 1450 3.4 934  
National Total Performance Winner, 1996  
All American 1991, 1992, 1993, 1995

### OLD MILL B TURMOIL \*TM 196052

"V88" MACE  
PPR: -56 94%R PTAT: +0.2 95%R (4/10)  
PTA: -821m -36f -8p -187NM\$ 97%R

### BLESSING PR SHIRLAN 834448

9/05 "3E93" E95 E96 E95 E92 E92 (11/02)  
"Certified"  
2/00 289d 2x 14400 4.1 592 3.6 518  
2/11 299d 2x 12670 4.3 549 3.6 462  
4/00 305d 2x 24140 5.1 1228 3.7 884  
5/00 365d 2x 31740 5.7 1804 3.5 1117  
6/01 365d 2x 28880 4.9 1419 3.8 1092  
8/02 365d 2x 30440 5.2 1578 3.4 1041  
National Total Performance Winner, 2000  
Nominated All American Jr. 2 Year Old, 1995  
Hon. Men. All American Jr. 3 Year Old, 1996  
Reserve All American 4 Year Old, 1997  
All American 5 Year Old, 1998  
Hon. Mention All American Aged Cow, 2001