

# POTENTIAL 14TH GENERATION "EXCELLENT" A JANUARY 2010 WONDERMENT FROM THE MADORAS

The  
Dam -  
"2E92"  
"91MS"  
3 records  
over  
30,000M!



### 3rd thru 13th Dams:

#### V B JET JOSE PLUMA MADORA 871338

5/04 "2E90" E93 E90 E93 E90 V87 (12/02)  
2/00 365d 2x 20440 4.4 892 3.6 740  
3/02 352d 2x 26580 4.2 1129 3.6 945  
4/04 365d 2x 32430 4.4 1426 3.5 1134  
Reserve All American Summer Yearling, 1998

#### V B JOSE UNA MADORA 814122 "2E"

5/07 320d 2x 22240 4.1 904 3.7 818  
All American Winter Yearling, 1993

#### V B SENSATION MADORA ONCE TWIN "2E"

4/08 365d 2x 24480 3.7 904 3.6 878

#### V B PREMIER PLUMA PROMADORA "E"

3/06 280d 2x 14890 3.9 588 4.0 590

#### V B PROSPECT MADORA "3E"

#### V B FAVORITE MADORA "3E"

6/02 327d 2x 21020 3.7 772

#### V B BANCO PLUMA MADORA "2E-Elite"

4/06 365d 2x 22330 4.2 936

#### V.B. CRESCENT MADONNA "3E"

8/06 365d 2x 16370 4.7 769

#### V.B. MADAM PLUMADONNA "2E"

5/06 328d 2x 19290 3.9 744

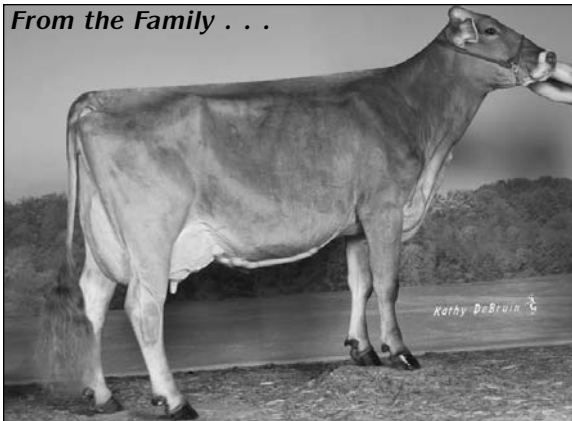
#### V.B. PLUMA DONNA PAVANNE "E-Cert."

6/07 305d 2x 19190 3.8 726

#### V.B. PLUMA LIEGE "2E/ExMS"

6/01 305d 3x 20917 4.2 885

From the Family . . .



#### V B Hillpoint Marilyn ET "E90/92MS"

4-0 337d 30,550m 4.3% 1310f 3.5% 1060p  
1st 4 Year Old, Wisconsin State Show, 2009

**ADD A  
MADORA  
TO YOUR  
GENETICS!**

*A great opportunity to buy into one of the  
deepest pedigrees of "Excellent" Dams, Show  
Winners and Solid Production.*

*This calf is the whole package!*



## Voegeli Farm, Inc.

Registered Brown Swiss Since 1895!

N7190 Hwy. 39-69

Monticello, Wisconsin 53570-9502

Phone: (608) 938-4796 • Fax: (608) 938-4106



## Mike & Linda Hellenbrand

5065 N. Hillpoint Rd.  
Cross Plains, WI 53528  
phone 608.798.1952

## 19 VB Hillpoint Won Madison ET

Tattoo: HA71  
Born: January 27, 2010  
Reg. No. 68120260

Parent Average: PPR: +114 PTAT: +1.0 (4/10)  
PA: +819m +25f +26p +193NM\$

### TOP ACRES C WONDERMENT ET \*TM

"E90" "Qualified Sire" 196880

GEN:

PPR: +192 79%R PTAT: +0.9 84%R (4/10)

PTA: +1489m +62f +46p +328NM\$ 83%R

45 daus. avg. 23887 4.0 965 3.3 784

38 class. daus. avg.

FS: 84.9 UDC: -0.13 FLC: +0.02

### V B RIVER PLUMA MADORA 907426

5/08 "2E92" E94 E94 E91 E93 E91 (6/07)

2/06 365d 2x 20480 3.3 677 3.6 729

3/08 365d 2x 30960 3.9 1215 3.3 1037

4/10 325d 2x 30400 3.2 978 3.4 1019

5/11 365d 2x 35610 3.1 1105 3.3 1182

### R HART BC COLLECTION \*TM 189182

"E93" MACE

PPR: +3 99%R PTAT: +0.5 99%R (4/10)

PTA: +169m +12f +10p -171NM\$ 99%R

### TOP ACRES EJ WHIZZBANG 795771

16/09 "5E93" 5E94 5E95 5E93 5E95 5E92

5/04 365d 2x 27720 6.0 1670 3.6 985

8/00 365d 2x 28980 5.2 1505 3.5 1011

10/00 365d 2x 27750 5.2 1450 3.4 934

National Total Performance Winner, 1996

All American 1991, 1992, 1993, 1995

### ALEGRIA ENSIGN RIVER ET 193410

"E90"

PPR: +68 71%R PTAT: +0.6 80%R (4/10)

PTA: +261m -7f -3p +319NM\$ 74%R

### V B COLLECT JJ PLUMA MADORA 889516

5/07 "2E90" E94 V86 E93 V87 E90 (3/05)

2/01 296d 2x 17680 4.4 786 3.6 645

3/01 365d 2x 23790 4.4 1043 3.7 869

1st Summer Yearling, Wisconsin State Fair, 2000

Consigned by  
Voegeli Farm, Inc. and Hillpoint Partners  
Monticello, Wisconsin  
608.938.4796 and 608.798.1952

**Congratulations Kentucky Breeders on Hosting the 2010 Convention**

## *Long Lane Farms*

*Welcomes you to stop by and visit us while attending the National Convention.*



*We are just a short 45 minute drive from the fairgrounds, come check out our 200+ head of Swiss including . . .*

*Paris "2E92" - 2008 Cow for All Seasons*

*Prize (Paris's daughter) - 2008 National Youth Production Award Winner  
and 40+ 1st lactation heifers with really beautiful udders, like -*

*Petal "93" udder*

*Pattie "91" udder*

*Penny "90" udder*

*Passion "90" udder*

*Piper "90" udder*

*Linn "90" udder*

*Vino "90" udder*

*Nikki "90" udder*

*Francis "90" udder*

### ***And our National Sale Consignment:***

#### ***Niermans Collection Francis "VG88"***

*Fresh at 1 yr 11 mos., she is extremely tall (61"), great frame, beautiful udder*

*1-11 305d 14,662m 4.5% 664f 3.2% 472p (RIP)*

*Her breakdown, scored in April:*

*SS DO RP MO US Final*

*91 82 81 92 90 "88"*

*She is due in August to Agenda - ready for all the fall shows!*

#### ***Her dam: Niermans Pelude Farrah "2E90"***

*Working on her 4th consecutive record of over 30,000# milk and 1000# fat*

*7-2 226d 19,885m 5.0% 995f 3.3% 664p (RIP)*

### ***A Tremendous Cow Family!***

(812) 358-4926

**The Niermans**

(812) 358-3858

1876 E 400 S, Brownstown, Indiana 47220

*In our 65th year of Breeding Brown Swiss*

# 20 Niermans Collection Frances

Tattoo: 1582 Born: July 8, 2007  
Reg. No. 68100465

2/09 "V88" E91 +82 +81 E92 E90 (4/10)  
1/11 305d 2x 14662 4.5 664 3.2 472  
(RIP)

Bred 10/29/09 to:  
Blessing Banker Agenda ET \*TM 194882

**4th Dam: IDLYL WILD TELSTAR FESTAL**  
13/01 "4E91" E91 E91 E90 E90 E90  
3/04 365d 3x 20450 4.0 821 3.6 745  
4/10 365d 2x 21670 4.1 883 3.4 746  
6/04 353d 2x 20020 4.0 802 3.5 699  
Lifetime: 3424d 192,820m 7656f 6703p

**5th Dam: IDYL WILD FRILLS FLORES "E"**  
5/02 365d 2x 23180 3.9 907 3.2 747

Consigned by  
Shelby Nierman, Brownstown, Indiana  
812.358.3858

## R HART BC COLLECTION \*TM 189182

"E93"  
MACE:  
PPR: +3 99%R PTAT: +0.5 99%R (4/10)  
PTA: +169m +12f +10p -171NM\$ 99%R  
16427 daus. avg. 21849 4.0 877 3.3 722  
11234 class. daus. avg.  
FS: 84.6 UDC: -0.68 FLC: +0.36

## NIERMANS PRELUDE FARRAH 924230

6/11 "2E90" E90 E95 E92 V86 V89 (7/09)  
"Certified"  
1/08 365d 2x 23450 4.3 1013 3.2 748  
3/06 365d 2x 32630 3.4 1120 3.3 1070  
4/11 365d 2x 34120 3.7 1268 3.4 1148  
6/01 364d 2x 34570 4.4 1532 3.4 1165  
7/02 226d 2x 19885 5.0 995 3.3 664  
(RIP)

## 6th Dam: MCNEELS BEAUTICIAN FRILLS "2E"

"Elite" "Superior Brood Cow"  
4/08 305d 2x 20510 3.6 734

## 7th Dam: MCNEELS LAYMAN FLOWER "V88"

"Elite" "Superior Brood Cow"  
9/06 365d 2x 22720 3.7 846

## TROUT RUN DISTINCT BLEND 181217

"E" MACE  
PPR: -117 99%R PTAT: -0.1 99%R (4/10)  
PTA: -633m -21f -16p -395NM\$ 99%R

## R HART CD CLAR ET 802797

7/01 "2E93" 2E95 2E94 E94 E92 2E91  
"Certified"  
2/00 365d 2x 26770 4.5 1207 3.6 959  
6/10 365d 3x 34680 4.3 1476 3.6 1239  
Reserve All American Aged Cow, 1997

## BETTA VUE EMORY PRELUDE ET 187668

"E91" MACE  
PPR: -33 99%R PTAT: +0.0 99%R (4/10)  
PTA: +165m -12f +2p -195NM\$ 99%R

## NIERMANS KIRK FLAIR 891228

3/01 "V85" V85 V86 V85 G79 V85 (10/02)  
1/05 365d 2x 17220 4.5 771 2.9 492  
2/10 297d 2x 16590 4.5 743 3.8 630  
3/10 365d 2x 22530 5.0 1132 3.5 782  
5/09 365d 2x 18150 5.1 930 3.3 607  
3rd Jr. 2 Year Old, Kentucky State Fair, 2001

## 3rd Dam: NIERMANS CHALLENGE FLAME

4/07 "V88" E91 E91 E90 V85 V87 (4/01)  
4/05 365d 2x 31490 3.6 1127 3.2 1008

We had a Theory . . . We thought you'd like!  
Take a Twilight son x a Double "P" cross (Polly x Priscilla)  
And get a September 2009 heifer  
you'll be "Proud" to own and show!

Check the pedigree - she's backed by Seven "Excellent" maternal dams!



Edwin Fry

P.O. Box 390, Chestertown, Maryland 21620  
410/778-0220

# 21 Fair Hill Theory Proud

Tattoo: 1463 Born: September 4, 2009  
Reg. No. 840003006216803

**4th Dam: TOP ACRES PRESENT ET 833043**  
15/00 "5E94" 5E91 5E94 5E93 5E91 5E96  
"Certified" "Superior Brood Cow"  
4/00 365d 2x 40190 4.9 1966 3.5 1405  
7/02 365d 2x 38070 4.8 1823 3.4 1280  
8/11 365d 2x 38630 4.3 1659 3.3 1259  
Lifetime: 2081d 182,740m 8366f 6426p

**5th Dam: ARNOLA PEGGY PRISCILLA 717943**  
15/07 "5E91" 5E91 4E91 5E90 2E92 5E90  
"Elite" "Superior Brood Cow"  
4/10 365d 2x 30800 4.4 1348 3.2 974  
National Total Performance Winner, 1989, 1991  
Nominated All American 3 Year Old, 1986

Consigned by  
Fair Hill Farm  
Chestertown, Maryland  
410.778.2372

## SUNNYISLE THEORY ET \*TM 198915

"Not Classified"  
GEN:  
PPR: -42 49%R PTAT: +0.6 48%R (4/10)  
PTA: +246m -3f -4p -245NM\$ 51%R

## FAIR HILL PAYOFF PRIDE ET 938153

4/09 "E90" E90 E91 V85 E90 E90 (1/10)  
"Certified"  
2/01 326d 3x 22180 4.5 988 3.3 735  
3/01 347d 3x 24430 3.9 961 3.5 854  
4/05 215d 3x 20437 3.5 731 3.3 640  
(RIP)

## 6th Dam: ARNOLA PAULINE PEGGY 683395

"4E" "Certified" "Superior Brood Cow"  
7/07 365d 2x 28410 3.5 1002 3.2 903  
8/09 365d 2x 26120 3.6 928 3.3 849

## 7th Dam: N C MTN ALARIC PAULINE 552194

"2E" "Elite" "Superior Brood Cow"  
6/00 365d 2x 25750 4.1 1064

## BLESSING MORT LAURA LEGACY 193906

"Not Classified" MACE  
PPR: -72 94%R PTAT: +0.7 96%R (4/10)  
PTA: -7m -6f -10p -324NM\$ 97%R

## SUNNYISLE COLBY TWILITE ET 916073

6/01 "2E93" E92 E96 E91 E92 E94 (11/08)  
"Certified"  
2/04 365d 2x 27550 4.6 1260 3.4 932  
3/06 365d 2x 34990 4.3 1505 3.3 1172  
All American, 2005, 2006, 2008

## TRIANGLE ACRES PO PAYOFF ET \*TM

"Not Class." "Superior Sire" MACE 193627  
PPR: +101 96%R PTAT: +0.4 96%R (4/10)  
PTA: +667m +18f +29p +145NM\$ 98%R

## SUN-MADE FRAME PROUD ET 920612

6/01 "E90" E90 E91 +84 V88 E91 (4/09)  
2/02 318d 3x 21880 3.7 811 3.1 686  
3/01 365d 3x 28450 3.5 993 3.2 907  
4/05 365d 3x 34030 3.2 1102 3.2 1067

## 3rd Dam:

### SUN-MADE GAR BRO PEPSI ET 856893

5/03 "2E91" E91 E92 E92 E90 E91  
"Certified"  
2/09 365d 2x 22440 3.8 857 3.5 778  
4/06 365d 2x 33540 4.0 1347 3.3 1125