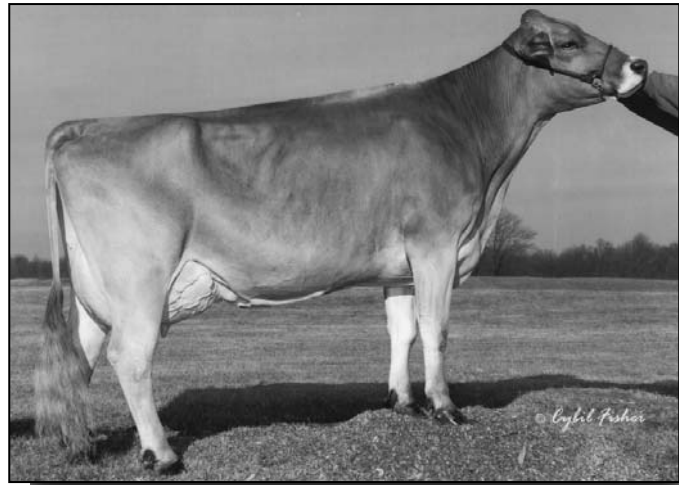




Loaded with production
from end to end!

Selling - Lot 69 / Dam of Lots 70-72-74



Harts Elevate Joslin "2E93/94MS"
6-9 365d 49,480m 4.7% 2322f 3.2% 1594p

Lot 69 - Harts Elevate Joslin 910588

Born: 9/19/01 Tattoo: 120
7/03 "2E93" E93 E93 E91 E90 E94 (1/09)
PPR: +112 54%R PTAT: -0.3 62%R (1/10)
PTA: +84m +27f +11p +385NM\$ 98%R
2/10 365d 2x 24070 3.7 896 3.5 845
4/02 365d 2x 34850 4.6 1610 3.3 1136
5/06 365d 2x 44881 5.0 2229 3.1 1397
6/09 365d 2x 49480 4.7 2322 3.2 1594
Lifetime: 1666d 165,660m 7551f 5424p

4th 5 Year Old 2x 305 Day Fat Honor Roll

Bred 2/27/20 to:
Lost Elm SA Premium ET 199451
GEN:
PTA: +757m +26f +16p +307NM\$ PPR: +103
(Ransom x Sun-Made Garbro EG Patsy)

HARTS ELEVATION TWIN *TM *TW 193857
"Not Classified" "Superior Sire" MACE:
PPR: +103 84%R PTAT: +0.6 76%R (1/10)
PTA: -3 +31f +18p +203NM\$ 88%R
992 daus. avg. 22275 4.1 922 3.3 744
782 class. daus. avg.
FS: 84.2 UDC: +0.50 FLC: +0.14

CIE HARTS COMPASSION JOSE 856361
5/08 "V86" V86 V86 V85 V85 V85 (10/00)
PPR: +24 60%R PTAT: -1.2 65%R
PTA: -718m -9f -14p +295NM\$ 93%\$
2/01 312d 2x 16590 4.5 741 3.8 628
3/00 365d 2x 20680 4.7 973 4.2 862
4/08 299d 2x 19080 4.3 824 4.0 766
5/07 290d 2x 16260 4.7 760 3.9 636
6/07 288d 2x 20020 4.4 889 3.5 691
7/05 365d 2x 20750 4.6 961 3.9 799

R HART BC COLLECTION *TM 189182
"E93" MACE
PPR: -1 98%R PTAT: +0.5 99%R (1/10)
PTA: +189m +12f +9p -184NM\$ 99%R

HARTS MATT ENVY 826451
6/05 "2E92" E95 E94 E91 E91 V89 (4/99)
3/03 365d 2x 37090 3.7 1373 3.9 1447
4/10 365d 2x 37190 4.6 1697 4.0 1472
6/02 365d 2x 44430 3.8 1696 3.8 1698
National Protein Award Winner, 1998, 2000

ROLLING VIEW COMPASON ET *TW (M)
"Not Classified" MACE 188900
PPR: +0 92%R PTAT: -1.1 94%R (1/10)
PTA: -726m -4f -14p +190NM\$ 95%R

ID HARTS BABS JD DEE 379317480
6/07 "G+83" + + V V + (10/94)
2/08 315d 2x 16480 4.1 673 3.9 637
3/08 365d 2x 19930 4.4 869 3.8 750
4/10 260d 2x 15280 4.2 642 3.7 566
5/09 358d 2x 20520 3.8 778 3.7 764
6/11 365d 2x 23050 4.3 990 4.0 917

Lot 70 - Lost Elm Bonafide Jose 946067

Born: 12/1/05 Tattoo: L 264
3/01 "V86" V85 V87 E90 +81 V88 (1/09)
PPR: +67 44%R PTAT: -0.1 49%R (1/10)
PTA: +108m +16f +7p +191NM\$ 81%R
2/09 365d 2x 25180 3.9 977 3.5 881
3/10 104d 2x 12125 4.5 544 3.3 402
(RIP)

Bred 1/15/10 to:
Paezza Denm Earn Scipio ET *TM 2400009299

LOST ELM BONAFIDE ET 195766
"Not Classified" MACE:
PPR: +50 87%R PTAT: +0.2 77%R (1/10)
PTA: +309m +17f +9p +37NM\$ 92%R
152 daus. avg. 23342 3.9 922 3.2 754
80 class. daus. avg.
FS: 83.0 UDC: -0.13 FLC: +0.82

HARTS ELEVATE JOSLIN 910588
7/03 "2E93" E93 E93 E91 E90 E94 (1/09)
PPR: +112 54%R PTAT: -0.3 62%R (1/10)
PTA: +84m +27f +11p +385NM\$ 98%R
2/10 365d 2x 24070 3.7 896 3.5 845
4/02 365d 2x 34850 4.6 1610 3.3 1136
5/06 365d 2x 44881 5.0 2229 3.1 1397
6/09 365d 2x 49480 4.7 2322 3.2 1594
Lifetime: 1666d 165,660m 7551f 5424p
4th 5 Year Old 2x 305 Day Fat Honor Roll

HILLTOP ACRES PR DOMINATE ET *TM
"Not Classified" MACE 190913
PPR: +2 98%R PTAT: -0.2 99%R (1/10)
PTA: +648m +30f +9p -116NM\$ 99%R

FRONT LINE BELLE ET 893366
5/10 "2E91" E91 V85 V88 E90 E94 (12/05)
"Certified"
2/07 365d 2x 27640 4.9 1362 3.7 1016
5/03 365d 2x 42140 5.1 2147 3.5 1461

HARTS ELEVATION TWIN *TM *TW 193857
"Not Classified" "Superior Sire" MACE
PPR: +103 84%R PTAT: +0.6 76%R (1/10)
PTA: -3 +31f +18p +203NM\$ 88%R

CIE HARTS COMPASSION JOSE 856361
5/08 "V86" V86 V86 V85 V85 V85 (10/00)
2/01 312d 2x 16590 4.5 741 3.8 628
3/00 365d 2x 20680 4.7 973 4.2 862
4/08 299d 2x 19080 4.3 824 4.0 766
5/07 290d 2x 16260 4.7 760 3.9 636
6/07 288d 2x 20020 4.4 889 3.5 691
7/05 365d 2x 20750 4.6 961 3.9 799

Lot 71 - Lost Elm Agenda Janice 68104958

Born: 9/15/08 Tattoo: L349

Parent Average:
PPR: +69 PTAT: +0.3 (1/10)
PA: -131m +17f +4p +202NM\$

Bred 11/1/09 to:
Old Mill C Solution ET *TM 197841

3rd Dam:

CIE HARTS COMPASSION JOSE 856361
5/08 "V86" V86 V86 V85 V85 V85 (10/00)
3/00 365d 2x 20680 4.7 973 4.2 862
6/07 288d 2x 20020 4.4 889 3.5 691
7/05 365d 2x 20750 4.6 961 3.9 799

BLESSING BANKER AGENDA ET *TM 194882

"Not Classified"
MACE:
PPR: +66 90%R PTAT: +0.7 90%R (1/10)
PTA: -370m +18f +0p +213NM\$ 95%R
277 daus. avg. 22789 4.1 930 3.3 752
146 class. daus. avg.
FS: 83.7 UDC: +0.61 FLC: +1.86

LOST ELM BONAFIDE JOSE 946067

3/01 "V86" V85 V87 E90 +81 V88 (1/09)
PPR: +67 44%R PTAT: -0.1 49%R (1/10)
PTA: +108m +16f +7p +191NM\$ 81%R
2/09 365d 2x 25180 3.9 977 3.5 881
3/10 104d 2x 12125 4.5 544 3.3 402 (RIP)

BLESSING AYTOLA BANKER 190388

"Not Classified" MACE
PPR: -93 98%R PTAT: -0.1 99%R (1/10)
PTA: -485m -26f -11p -403NM\$ 99%R

BLESSING PROPHET ASHTON *TW 863033

10/01 "3E91" 3E91 E90 3E95 2E88 3E91
"Elite"
4/11 365d 2x 39470 4.2 1653 3.4 1351
6/02 356d 2x 35980 4.7 1682 4.0 1422
9/08 365d 2x 37770 4.3 1612 3.3 1240

LOST ELM BONAFIDE ET 195766

"Not Classified" MACE
PPR: +50 87%R PTAT: +0.2 77%R (1/10)
PTA: +309m +17f +9p +37NM\$ 92%R

HARTS ELEVATE JOSLIN 910588

7/03 "2E93" E93 E93 E91 E90 E94 (1/09)
PPR: +112 54%R PTAT: -0.3 62%R (1/10)
PTA: +84m +27f +11p +385NM\$ 98%R
2/10 365d 2x 24070 3.7 896 3.5 845
4/02 365d 2x 34850 4.6 1610 3.3 1136
5/06 365d 2x 44881 5.0 2229 3.1 1397
6/09 365d 2x 49480 4.7 2322 3.2 1594
Lifetime: 1666d 165,660m 7551f 5424p

Lot 72 - Lost Elm Scipio Joyful 959933

Born: 4/8/07 Tattoo: L 300

"Not Classified"

2/07 67d 2x 3914 4.5 178 3.6 136 (RIP)

Bred 1/23/10 to:
Lost Elm SA Premium ET 199451
GEN:
PTA: +757m +26f +16p +307NM\$ PPR: +103
(Ransom x Sun-Made Garbro EG Patsy)

PAEZZA DENM EARN SCIPIO ET 198610

"Not Classified"
MACE:
PPR: -14 72%R PTAT: -0.1 66%R (1/10)
PTA: -442m -4f -14p +62NM\$ 82%R
186 daus. avg. 23884 4.0 944 3.2 774
165 class. daus. avg.
FS: 82.6 UDC: +0.68 FLC: +0.64

HARTS ELEVATE JOSLIN 910588

7/03 "2E93" E93 E93 E91 E90 E94 (1/09)
PPR: +112 54%R PTAT: -0.3 62%R (1/10)
PTA: +84m +27f +11p +385NM\$ 98%R
2/10 365d 2x 24070 3.7 896 3.5 845
4/02 365d 2x 34850 4.6 1610 3.3 1136
5/06 365d 2x 44881 5.0 2229 3.1 1397
6/09 365d 2x 49480 4.7 2322 3.2 1594
Lifetime: 1666d 165,660m 7551f 5424p
4th 5 Year Old 2x 305 Day Fat Honor Roll

R HART TC DENMARK ET 189181

"E90" MACE
PPR: +20 99%R PTAT: +0.2 99%R (1/10)
PTA: -191m -9f +0p +60NM\$ 99%R

PAEZZA ARNEST ENIA ET 30132668

"Not Classified"
2/04 305d 2x 20110 3.5 707 3.5 707
3/08 305d 2x 21760 3.4 729 3.6 776
5/04 305d 2x 22650 3.4 767 3.5 787

HARTS ELEVATION TWIN *TM *TW 193857

"Not Classified" "Superior Sire" MACE
PPR: +103 84%R PTAT: +0.6 76%R (1/10)
PTA: -3 +31f +18p +203NM\$ 88%R

CIE HARTS COMPASSION JOSE 856361

5/08 "V86" V86 V86 V85 V85 V85 (10/00)
2/01 312d 2x 16590 4.5 741 3.8 628
3/00 365d 2x 20680 4.7 973 4.2 862
4/08 299d 2x 19080 4.3 824 4.0 766
5/07 290d 2x 16260 4.7 760 3.9 636
6/07 288d 2x 20020 4.4 889 3.5 691
7/05 365d 2x 20750 4.6 961 3.9 799

Lot 73 - Lost Elm Vigor Justine 68116356

Born: 12/4/09 Tattoo: L399

Parent Average:
PPR: +94 PTAT: +0.1 (1/10)
PA: -49m +10f +5p +347NM\$

3rd Dam:

CIE HARTS COMPASSION JOSE 856361
5/08 "V86" V86 V86 V85 V85 V85 (10/00)
3/00 365d 2x 20680 4.7 973 4.2 862
6/07 288d 2x 20020 4.4 889 3.5 691
7/05 365d 2x 20750 4.6 961 3.9 799

SUN-MADE VIGOR ET *TM 195618

"Not Classified" "Qualified Sire"
MACE:
PPR: +138 70%R PTAT: +0.3 52%R (1/10)
PTA: +82m +7f +12p +470NM\$ 72%R
75 class daus. avg:
FS: +0.0 UDC: +1.35 FLC: +1.23

LOST ELM SCIPIO JOYFUL 959933

"Not Classified"
2/07 67d 2x 3914 4.5 178 3.6 136 (RIP)

LOST ELM PRESIDENT ET 191215

"Not Classified" "Superior Sire" MACE
PPR: +109 96%R PTAT: +0.1 96%R (1/10)
PTA: +10m -8f +10p +407NM\$ 97%R

GENESIS EVEN VICTORIA ET 857348

10/08 "3E93" E94 E94 E93 E92 E93 (9/06)
"Certified"
2/04 365d 3x 26080 4.1 1057 3.7 959
3/06 365d 3x 28610 3.6 1024 3.9 1104
6/05 365d 2x 36530 4.3 1558 3.7 1348

PAEZZA DENM EARN SCIPIO ET 198610

"Not Classified" MACE
PPR: -14 72%R PTAT: -0.1 66%R (1/10)
PTA: -442m -4f -14p +62NM\$ 82%R

HARTS ELEVATE JOSLIN 910588

7/03 "2E93" E93 E93 E91 E90 E94 (1/09)
PPR: +112 54%R PTAT: -0.3 62%R (1/10)
PTA: +84m +27f +11p +385NM\$ 98%R
2/10 365d 2x 24070 3.7 896 3.5 845
4/02 365d 2x 34850 4.6 1610 3.3 1136
5/06 365d 2x 44881 5.0 2229 3.1 1397
6/09 365d 2x 49480 4.7 2322 3.2 1594
Lifetime: 1666d 165,660m 7551f 5424p

Lot 74 - Lost Elm Agenda Jo Dee 68104963

Born: 6/25/08 Tattoo: L353

Parent Average:
PPR: +91 PTAT: +0.2 (1/10)
PA: -143m +23f +6p +299NM\$

Bred 2/20/10 to:
Lost Elm SA Premium ET 199451
GEN:
PTA: +757m +26f +16p +307NM\$ PPR: +103
(Ransom x Sun-Made Garbro EG Patsy)

BLESSING BANKER AGENDA ET *TM 194882
"Not Classified"
MACE:
PPR: +66 90%R PTAT: +0.7 90%R (1/10)
PTA: -370m +18f +0p +213NM\$ 95%R
277 daus. avg. 22789 4.1 930 3.3 752
146 class. daus. avg.
FS: 83.7 UDC: +0.61 FLC: +1.86

HARTS ELEVATE JOSLIN 910588
7/03 "2E93" E93 E93 E91 E90 E94 (1/09)
PPR: +112 54%R PTAT: -0.3 62%R (1/10)
PTA: +84m +27f +11p +385NM\$ 98%R
2/10 365d 2x 24070 3.7 896 3.5 845
4/02 365d 2x 34850 4.6 1610 3.3 1136
5/06 305d 2x 39440 5.0 1989 3.1 1204
6/09 365d 2x 49480 4.7 2322 3.2 1594
Lifetime: 1666d 165,660m 7551f 5424p
5th 5 Year Old 2x 305 Day Milk Honor Roll
4th 5 Year Old 2x 305 Day Fat Honor Roll

BLESSING AYTOLA BANKER 190388
"Not Classified" MACE
PPR: -93 98%R PTAT: -0.1 99%R (1/10)
PTA: -485m -26f -11p -403NM\$ 99%R

BLESSING PROPHET ASHTON *TW 863033
10/01 "3E91" 3E91 E90 3E95 2E88 3E91
"Elite"
4/11 365d 2x 39470 4.2 1653 3.4 1351
6/02 356d 2x 35980 4.7 1682 4.0 1422
9/08 365d 2x 37770 4.3 1612 3.3 1240

HARTS ELEVATION TWIN *TM *TW 193857
"Not Classified" "Superior Sire" MACE
PPR: +103 84%R PTAT: +0.6 76%R (1/10)
PTA: -3 +31f +18p +203NM\$ 88%R

CIE HARTS COMPASSION JOSE 856361
5/08 "V86" V86 V86 V85 V85 V85 (10/00)
2/01 312d 2x 16590 4.5 741 3.8 628
3/00 365d 2x 20680 4.7 973 4.2 862
4/08 299d 2x 19080 4.3 824 4.0 766
5/07 290d 2x 16260 4.7 760 3.9 636
6/07 288d 2x 20020 4.4 889 3.5 691
7/05 365d 2x 20750 4.6 961 3.9 799

Lot 75 - Bail-Mik Scipio Starlite ET 960343

Born: 12/1/07 Tattoo: 148

"Not Classified"

Bred 12/20/09 to Top Acres Brinks ET *TM 193141

1/11 94d 2x 6973 4.8 334 3.7 258 (RIP)

Lot 76 - Bail-Mik Scipio Strbrite ET 960342

Born: 11/24/07 Tattoo: 147

"Not Classified"

Bred 12/15/09 to Victory Acres Simon Even ET *TM 186040

2/00 60d 2x 2448 3.6 88 3.9 95 (RIP)

PAEZZA DENM EARN SCIPIO ET 198610

"Not Classified"
MACE:
PPR: -14 72%R PTAT: -0.1 66%R (1/10)
PTA: -442m -4f -14p +62NM\$ 82%R
186 daus. avg. 23884 4.0 944 3.2 774
165 class. daus. avg.
FS: 82.6 UDC: +0.68 FLC: +0.64

ELM PARK HART AMERI LADY ET 910575

5/05 "2E91" E91 E92 E90 V88 E92 (8/07)
"Certified" #3PPR Cow (1/10)
PPR: +245 59%R PTAT: +0.5 65%R (1/10)
PTA: +1346m +79f +66p +413NM\$ 98%\$
2/00 313d 3x 20050 4.6 918 3.7 737
3/00 365d 3x 48430 4.4 2149 3.5 1716
4/03 365d 3x 41910 5.0 2115 3.6 1522
1st Jr. 3 Year Old 305 Day 3x Protein Honor Roll
2nd Jr. 4 Year Old 305 Day 3x Protein Honor Roll
1st Jr. 4 Year Old 365 Day 3x Protein Honor Roll
2nd Jr. 3 Year Old 305 Day 3x Milk Honor Roll
2nd Jr. 3 Year Old 365 Day 3x Milk Honor Roll
4th Jr. 4 Year Old 305 Day 3x Milk Honor Roll
3rd Jr. 4 Year Old 365 Day 3x Milk Honor Roll
3rd Jr. 3 Year Old 305 Day 3x Fat Honor Roll
2nd Jr. 4 Year Old 305 Day 3x Fat Honor Roll
1st Jr. 4 Year Old 365 Day 3x Fat Honor Roll

R HART TC DENMARK ET 189181

"E90" MACE
PPR: +20 99%R PTAT: +0.2 99%R (1/10)
PTA: -191m -9f +0p +60NM\$ 99%R

PAEZZA ARNEST ENIA ET 30132668

"Not Classified"
2/04 305d 2x 20110 3.5 707 3.5 707
3/08 305d 2x 21760 3.4 729 3.6 776
5/04 305d 2x 22650 3.4 767 3.5 787

WESTLEY MATT GORDON *TW 192483

"Not Classified" MACE
PPR: +37 97%R PTAT: -0.2 96%R (1/10)
PTA: -202m +21f +16p -51NM\$ 98%R

HARTS ELM PARK EVIE ET 880099

2/10 "V88" V88 V88 V85 +83 E90 (7/01)
"Certified"
PPR: +120 63%R PTAT: +0.5 68%R (1/10)
PTA: +371m +51f +29p +195NM\$ 82%\$
1/11 365d 2x 29230 5.3 1536 3.8 1097
2nd Under 2 Yr. Old 305 Day 2x Fat Honor Roll
1st Under 2 Yr. Old 365 Day 2x Fat Honor Roll
4th Under 2 Yr. Old 365 Day 2x Protein Honor Roll

Maternal sisters to Evie:

HARTS MATT ENVY "2E92"
6/02 365d 2x 44430 3.8 1696 3.8 1698
HARTS ELM PARK EMPRESS ET "2E92"
6/00 365d 2x 47190 4.7 2216 3.3 1544
HARTS MONTANA ET "2E91"
5/01 365d 2x 35590 4.8 1724 3.8 1345

4th thru 7th Dams:

JUST SO CDJ EDIE 731680
8/05 "V85" V + V V
3/05 302d 2x 10970 4.4 486 3.8 416
4/05 353d 2x 12120 4.7 572 4.0 480
5/11 365d 2x 20560 4.9 995 4.1 839
7/02 365d 2x 19720 4.8 938 4.0 792
SLEEPY MEADOWS JEWEL EDEL "3E"
6/05 365d 2x 15540 4.4 684
SLEEPY MEADOWS LILASON JEWEL "2E"
8/07 365d 2x 19180 4.6 880
All American Produce of Dam, 1981
SLEEPY MEADOWS JEWEL DIANE "V88"
7/06 365d 2x 17680 4.2 741

FOREST LAWN SIMN JUPITER ET *TM

JUST SO EMORY EDGE ET 808364

4/05 "V88" E E V E V (7/95)
"Certified"
1/08 282d 2x 15740 4.5 701 3.9 609
3/08 365d 2x 31820 6.3 2020 4.1 1307
3rd Sr. 3 Year Old 365 Day 2x Fat Honor Roll

Dam of Lots 75 & 76



Elm Park Hart Ameri Lady ET "2E91"
 Dam of #1 PPR Cow (1/08)
 Bail-Mik P Lady Liberty ET



Dam for Lot 77



Harts Elm Park Empress ET "2E92"
 6-0 365d 47,190m 4.7% 2216f 3.3% 1544p

Lot 77 - Lost Elm Supreme Ellie ET 959917

Born: 7/18/07

Tattoo: L 312

"Not Classified"

2/06 20d 2x 1152 3.6 4.2 3.3 38 (RIP)

Fresh 1/27/10

OLD MILL WDE SUPREME ET *TM 197920

"Not Classified"

GEN:
 PPR: +9 75%R PTAT: +0.7 70%R (1/10)
 PTA: -211m -9f -5p -17NM\$ 84%R
 67 daus. avg. 23362 3.9 917 3.3 761
 19 class. daus. avg.:
 FS: 84.6 UDC: +1.21 FLC: +1.02

HARTS ELM PARK EMPRESS ET 884233

6/10 "2E92" E91 E94 E92 E93 E90 (12/05)
 "Certified"
 2/07 301d 2x 15720 5.0 786 3.7 586
 3/07 304d 2x 21010 5.7 1204 3.6 758
 6/00 365d 2x 47190 4.7 2216 3.3 1544
 3rd Mature Cow 305 Day 2x Milk Honor Roll
 3rd Mature Cow 365 Day 2x Milk Honor Roll
 5th Mature Cow 365 Day 2x Protein Honor Roll

BRIDGE VIEW PRIMETIME *TM 191848

"Not Classified" MACE
 PPR: -78 93%R PTAT: +0.6 96%R (1/10)
 PTA: -619m -23f -21p -303NM\$ 95%R

OLD MILL E SNICKERDOODLE OCS 883215

9/09 "3E94" E92 E95 E94 E93 E97 (7/08)
 4/08 365d 2x 31190 4.5 1395 3.5 1095
 6/09 365d 2x 33590 4.2 1418 3.6 1193
 9/06 365d 2x 31520 4.7 1482 3.4 1070
 Supreme Champion, World Dairy Expo, 2003

FOREST LAWN SIMN JUPITER ET *TM

"E" MACE 185302
 PPR: +51 89%R PTAT: -0.1 86%R (1/10)
 PTA: +290m +17f +0p +137NM\$ 90%R

JUST SO EMORY EDGE ET 808364

4/05 "V88" E E V E V (7/95)
 "Certified"
 1/08 282d 2x 15740 4.5 701 3.9 609
 3/08 365d 2x 31820 6.3 2020 4.1 1307
 3rd Sr. 3 Year Old 365 Day 2x Fat Honor Roll

Maternal sisters to Empress:

HARTS MATT ENVY "2E92"
 6/02 365d 2x 44430 3.8 1696 3.8 1698
HARTS ELM PARK ELLE ET "2E90"
 2/00 365d 2x 32340 4.6 1478 3.2 1050
HARTS MONTANA ET "2E91"
 5/01 365d 2x 35590 4.8 1724 3.8 1345

4th thru 6th Dams:

SLEEPY MEADOWS JEWEL EDEL "3E"
 6/05 365d 2x 15540 4.4 684
SLEEPY MEADOWS LILASON JEWEL "2E"
 8/07 365d 2x 19180 4.6 880
 All American Produce of Dam, 1981
SLEEPY MEADOWS JEWEL DIANE "V88"
 7/06 365d 2x 17680 4.2 741

VICTORY ACRES JUBILAT EMORY *TM

JUST SO CDJ EDIE 731680
 8/05 "V85" V + V V
 3/05 302d 2x 10970 4.4 486 3.8 416
 4/05 353d 2x 12120 4.7 572 4.0 480
 5/11 365d 2x 20560 4.9 995 4.1 839
 7/02 365d 2x 19720 4.8 938 4.0 792